

## DODGE

AFTERMKT KIT #	DESCRIPTION	BRAKE #	CONTROL GROUP	MOUNTING GROUP
C14000**	'88 '98 12 VALVE WITH STANDARD TRANSMISSION	C10290	C11850	C11855
C14000AT**	'88 '98 12 VALVE WITH AUTOMATIC TRANSMISSION	C10290AT	C11850	C11855
C14024	'98 '00 24 VALVE ALL TRANSMISSIONS	C10293	C11910	C11915
C14024E	'98 '00 24 VALVE ALL TRANSMISSIONS ECM ELEC. TIE IN	C10293	C11917	C11919
C14025*	'99-'01 24 VALVE ALL TRANS ECM ELEC. TIE-IN.	C10293	C11919	C11917

\*INCLUDES C14099 ADAPTER GROUP, TO ADAPT C10293 BRAKE TO '99-'01 TURBO (SEE BELOW).

\*\*FOR '88-'93 C14005 HEADER PIPE KIT IS REQUIRED (PARTS LISTED ON PAGE 2).

\*\*FOR ALL 12 VALVE ENGINES C14010 PERFORMANCE KIT IS RECOMMENDED. (PARTS LISTED ON PAGE 2).

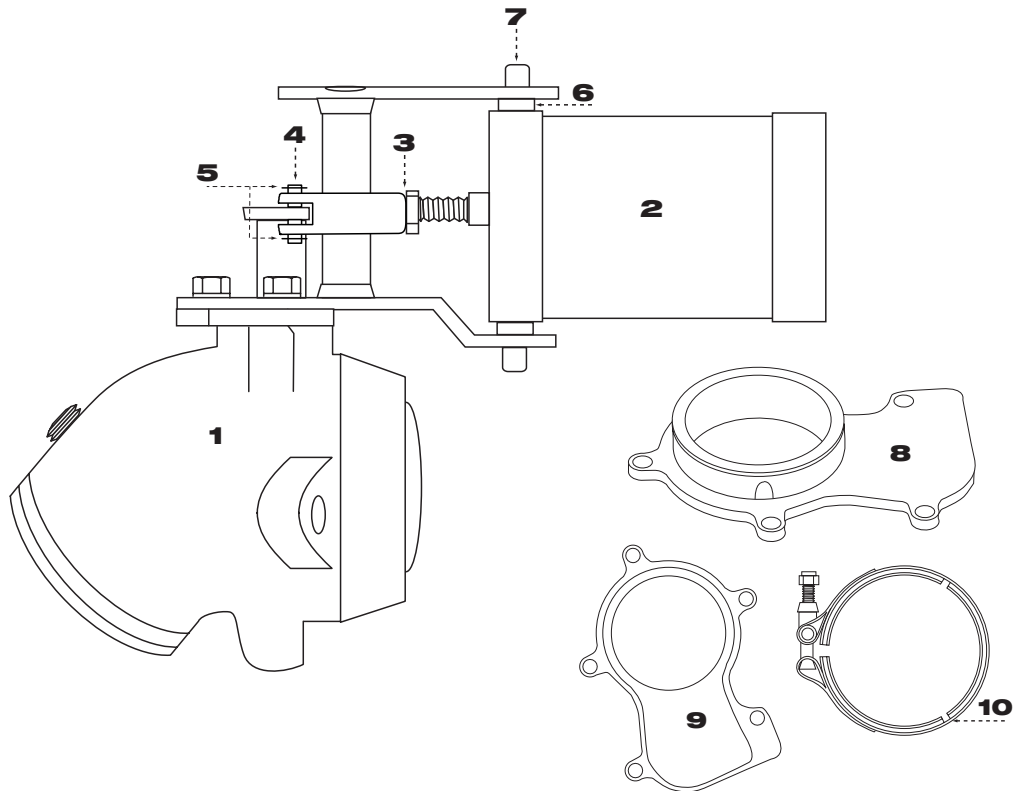
ILLUST. #	PART #	DESCRIPTION	QTY
1 (A,B,C,)	SEE CHART BELOW	BRAKE HOUSING	1
2	C11828*	CYLINDER	1
3	C11825	CLEVIS & LOCKNUT	1
4	C11826	CLEVIS PIN	1
5	C11827	E-CLIP	2
6	C11882	STEP WASHER	2
7	C11883	PIVOT BOLT	2*

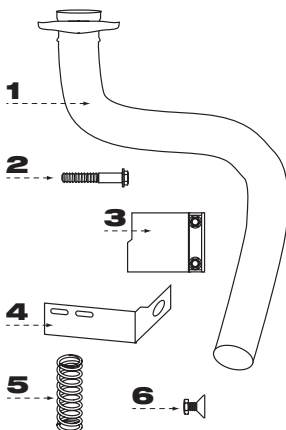
\*NOTE: EARLY MODEL BRAKES USED A CYLINDER WITH RIVETED END CAPS. FOR SERVICING THESE CYLINDERS USE C11898 RETROFIT KIT.

ILLUST. #	BRAKE MODEL
1A	C10290
1B	C10290AT
1C	C10293

### C14099 ADAPTER KIT

ILLUST. #	PART #	DESCRIPTION	QTY
8	C14098	ADAPTER	1
9	C14097	GASKET	1
10	C14096	CLAMP	1



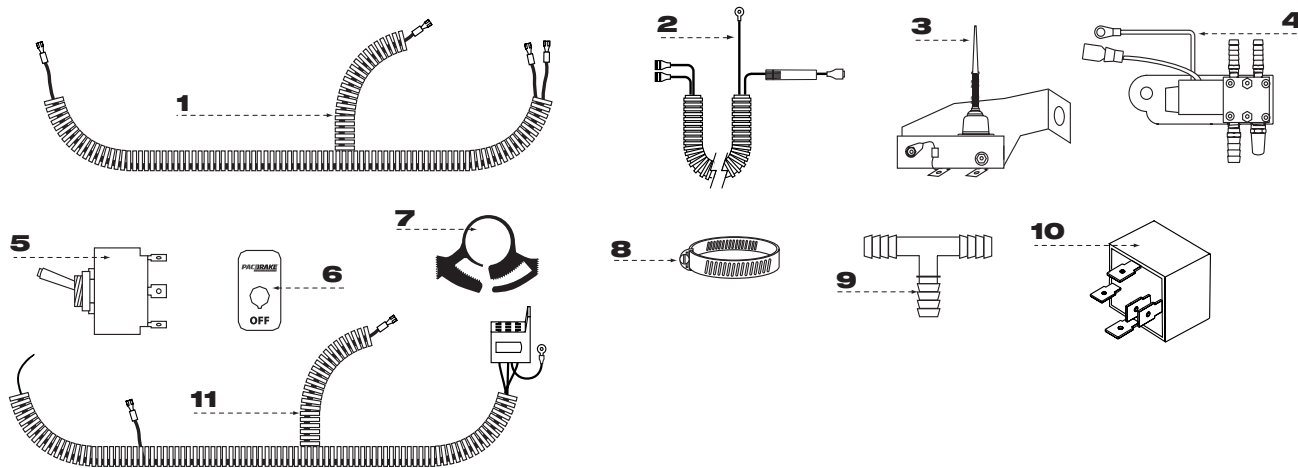


**C14005 HEADER PIPE KIT**

ILL. #	PART #	DESCRIPTION	QTY
1	C11840	EXHAUST PIPE	1
2	C11846	CAPSCREW M10 X 50MM	2
3	C11847	3" LAP JOINT CLAMP	1
4	C11913	THROTTLE SW. BRKT.	1

**C14010 PERFORMANCE KIT**

ILL. #	PART #	DESCRIPTION	QTY
5	C11889	HEAVY DUTY EX. VLV. SPRING	6
6	C11880	PERFORMANCE SCREW & NUT	1



QUANTITY INCLUDED IN EACH SUBGROUP

ILL. #	PART #	DESCRIPTION	C11850	C11855	C11910	C11915	C11917	C11919
1	C11836	SOLENOID HARNESS	1	0	1	0	0	0
2	C11871	FUSE HARNESS	1	0	1	0	1	0
N.I.	C11845	VACUUM HOSE 3/8" X 13"	0	2	0	2	0	0
N.I.	C11869	VACUUM HOSE 7/32" X 6'	0	1	0	1	0	1
3	C11906*	THROTTLE SWITCH ASSY.	0	1	0	1	0	0
4	C11849	VACUUM SOLENOID ASSY.	0	1	0	1	0	1
5	C11304	LIGHTED SWITCH	1	0	1	0	1	0
6	C10315	SWITCH PLATE	1	0	1	0	1	0
N.I.	C11867	BARBED FTG. STRAIGHT	0	1	0	1	1	0
N.I.	C11868	BARBED FITTING 90	0	1	0	1	1	0
7	C11948	HOSE CLAMP RATCHET	0	1	0	1	1	0
8	C11952	GEAR CLAMP MH6	0	1	0	0	0	0
9	C11831	VACUUM TEE FITTING	0	1	0	0	0	0
9	C11908	VACUUM TEE FITTING	0	0	0	1	1	0
7	C11832	HOSE CLAMP	0	5	0	4	4	0
7	C11870	HOSE CLAMP SMALL	0	4	0	4	4	0
10	P60045	RELAY	0	0	0	0	1	0
11	C11705	ELECTRONIC HARNESS	0	0	0	0	0	1

\* EARLIER KITS USED C11839 SWITCH ASSEMBLY LOCATED ON THE FUEL PUMP. USE C11911 UPGRADE KIT FOR SERVICING.

