

Service

BULLETIN #152

DECEMBER 2000

PAGE 1/1

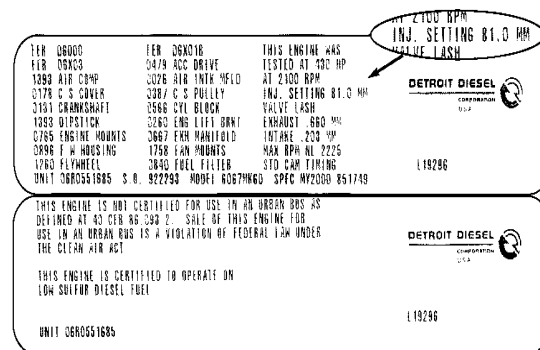
| | |
|-----------------|---------------------------------------|
| MODELS AFFECTED | P-80/P-80A |
| SUBJECT | INTRODUCTION OF PACBRAKE P-80A |

Detroit Diesel Series Corporation will be implementing a new camshaft for Series 60 engines starting in mid December 2000. This new camshaft necessitates a new model Pacbrake for both 12.7 and 14 litre engines.

Identification of engines equipped with the new camshaft **can only** be done by viewing the specification tag on the valve cover for the injector setting. See illustration.

| ie; | Injector Setting | Pacbrake Model |
|-----|------------------|----------------|
| | 81 mm | P-80 |
| | 82.1 mm | P-80A |

The new P-80A has smaller 3/8" thread solid brake adjusting screws unlike the previous 1/2" thread Paclash screws on the P-80. The brake (lash) adjustment remains at 1/2 turn back from zero lash with locknut torque not to exceed the current 25 lbs. ft.



Engine brake kits will be well marked as misapplication will result in serious engine damage.

Brake housings are also identified by tags stating P-80 or P-80A, and must not be interchanged if a field replacement is required. Please use the following part numbers for ordering brake housings.

| P-80 Housings | | P-80A Housings | |
|---------------|--------|----------------|--------|
| front | rear | front | rear |
| P80001 | P80002 | P80006 | P80007 |

Please call 1-800-663-0096 and ask for Pacbrake Customer Service for further information. This is a product improvement not subject to campaign.

Pacbrake Service

