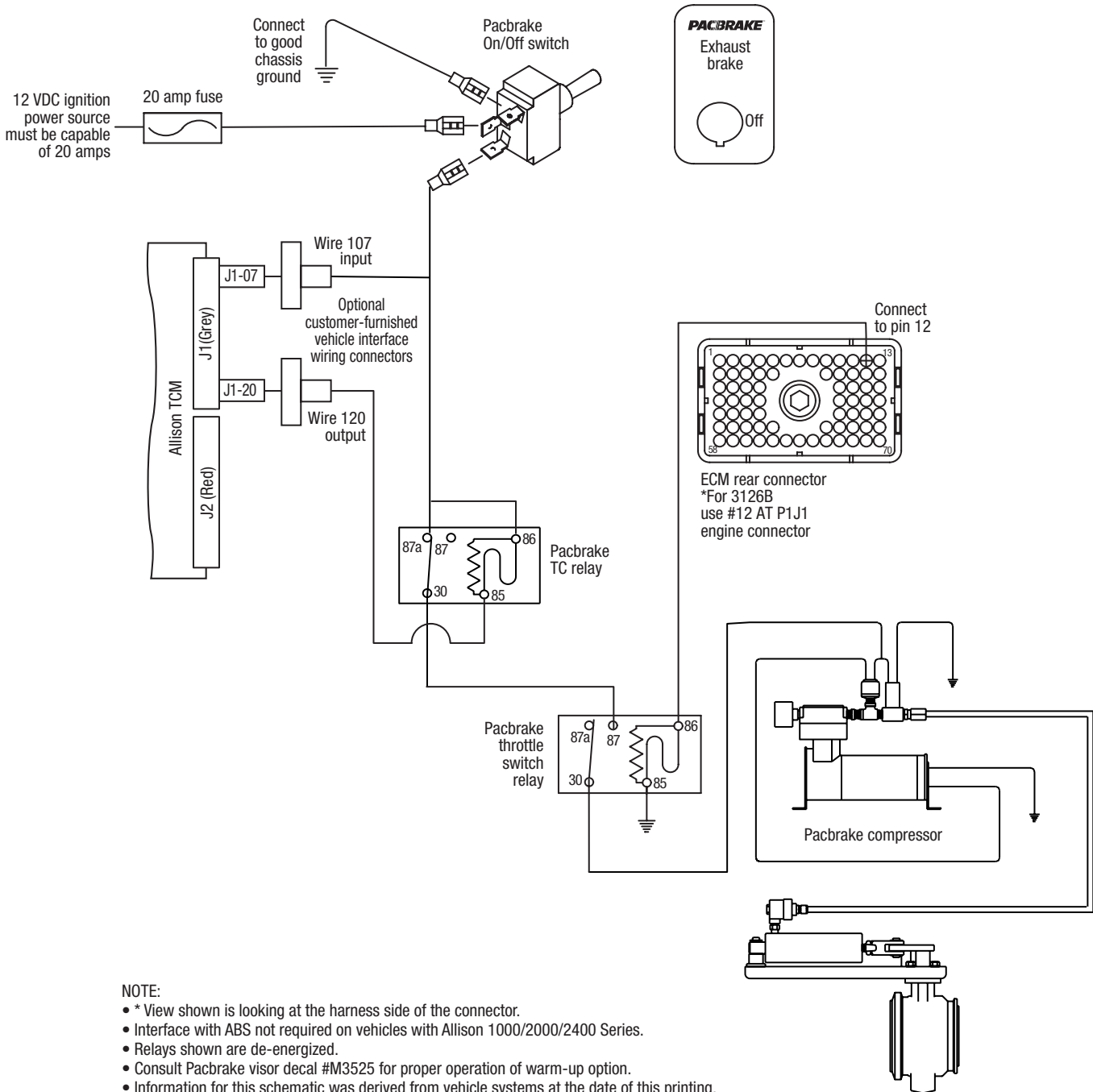


PACBRAKE EXHAUST BRAKE WIRING SCHEMATIC FOR:

CATERPILLAR 3126B

For vehicles: (WITH) Allison 1000/2000/2400 Series transmissions (WITH or WITHOUT) ABS braking (WITHOUT) on-board air system

Note: Do not use on vehicles equipped with **Allison 4th Generation Transmissions**, they are identified by one connector at the transmission ECU, consult Pacbrake factory



NOTE:

- * View shown is looking at the harness side of the connector.
- Interface with ABS not required on vehicles with Allison 1000/2000/2400 Series.
- Relays shown are de-energized.
- Consult Pacbrake visor decal #M3525 for proper operation of warm-up option.
- Information for this schematic was derived from vehicle systems at the date of this printing.
- Updates or variations by vehicle manufacturers constituting changes will not be the responsibility of Pacbrake.

